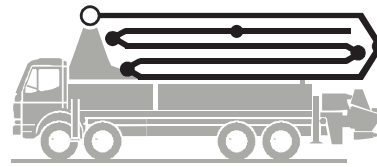


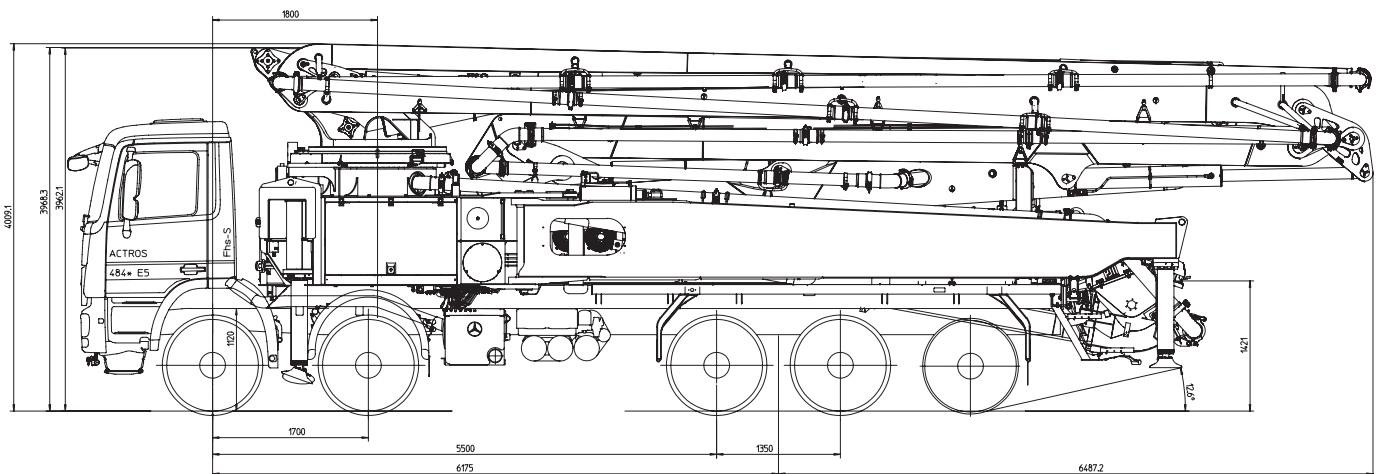
Truck-mounted concrete pump

BSF 53-6.16 H

Output up to 190 m³/h
 Delivery pressure up to 130 bar*



.16 H LS
.17 i LS
.19 i LS



Note: Standard version. Dimensions and weights depend on truck, pump model and equipment.
 Dimensions in mm, MB-Arocs 4851, Euro 6.
 For illustration only.

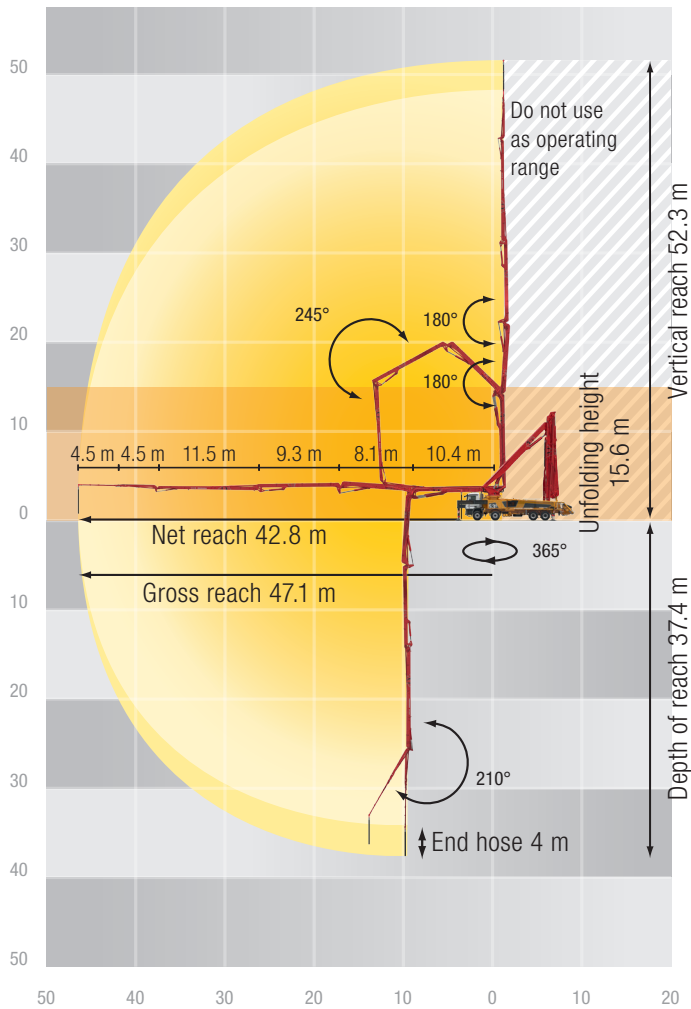
Technical data

Boom M53		
Sections		6
Reach height	m	52.3
Horizontal reach	gross	m 47.1
	net	m 42.8
Reach depth max.	m	37.4
Unfolding height	m	15.4
End hose length	m	4
Folding system		RZ
Delivery line		DN 125

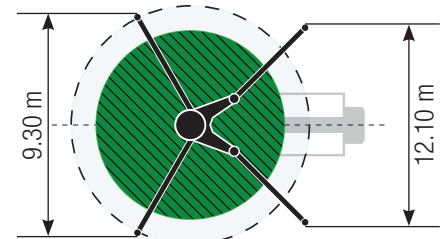
Pump		BSF	.16 H	.16 H LS	.17 i LS	.19 i LS
Rod side	Output	m ³ /h	160	-	-	-
	Delivery pressure	bar	85	-	-	-
	Strokes	1/min.	31	-	-	-
Piston side	Output	m ³ /h	108	160	170	190
	Delivery pressure	bar	130	85	85	85
	Strokes	1/min.	21	26	26	30
	Delivery cylinder	Ø mm	230	250	250	250
	Stroke	mm	2100	2100	2100	2100

*) Delivery line boom max. 85 bar.
 All data maximum theoretical.

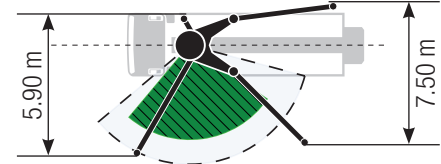
BSF 53-6 Reach information diagram, Support



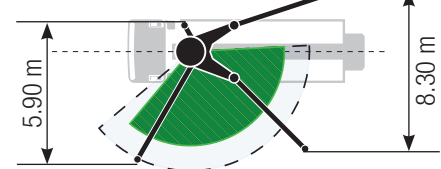
Standard



ESC



OSS



Support width based on center of support leg

Serial delivery scope

C-pipe connection for filling water tank
Cardan shaft maintenance free
Diesel tank in support leg
Ergonic Graphic Display (EGD) with machine fault management
Ergonic Pump System (EPS) incl. Ergonic Output Control (EOC)
Ergonic Teleservice (ETS) without SIM Card
OSS one side support (assistance device), NOT for EWR-Area
S-transfer tube switchover fast/slow
Tool set incl. standard equipment
Agitator and water pump radio remote/ on site controlled
Agitator safety switch off, RFID with startup protection
Boom pedestal TRDI
Box for sponge balls
Central lubrication hopper, electrically

Chassis horn via remote control on hopper
Connection Diesel tanks (only MB/MAN-Chassis)
Connections for hydraulic emergency supply
Delivery cylinder chrome-plated
Delivery line (2-layer) PM2520
Delivery piston „compact“
Diagnose interface
End hose 4.0 m DN 125 5.5“
Flushing water pump 160 l/min 25 bar
Hand working search light lighting hopper LED
Hinged elbow with cleaning port
Hydraulic hose for replacement in hose pack
Lattice box rear side
Lighting modul control box, LED
Operating manuals 2x (1x paper, 1x CD-ROM) spare part list
Painting Standard

Platform non-skid
Pump on/off dependent on speed
Radio remote control proportional with display
Remote control with 40m cable, without display
Rubber collar on concrete hopper
Single piston
Spectacle wear plate DURO 22
Spray hose 10 m incl. bracket
Steps, first step foldable
Support plates (4x) in magazine (2x) open
Swivel support plates
Towing eye
Wash-out port lid with slide pin
Water supply at hopper (1/2“)
Water tank 800 l

See quotation for exact serial delivery scope.
Comprehensive range of options available on request.